

Sizes available: 5x7, 8.5x5.5, 6x9, 11x6

FRONT SIDE:

STEP 1

Yellow: Bleed area

A bleed is extending your art .125" beyond the cut line.
(adds .25" total on each side: 6x11 final size=6.25x11.25 file size)

Example 1: Photographs (300DPI Minimum)



Example 2: Patterns or Colored Shapes



STEP 2

Magenta: Cut Line

The actual dimensions your job will be cut at. (5x7, 6x9, 11x6...)

STEP 3

Blue: Safe Area

Keep all design elements with a margin here
Don't let your text outside the safe area
(like this)

STEP 4

Crop Marks

color: registration black
length: .25"
offset: .08"

BACK/MAILING SIDE:

STEP 5

BLANK INDICIA AREA

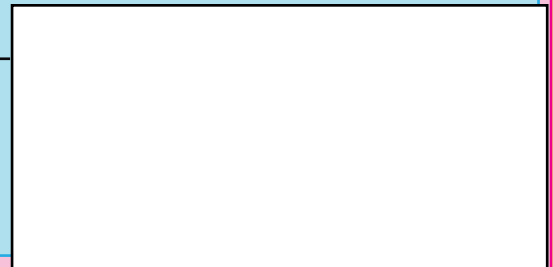
Place: Top Right
Width: 1"
Height: .85"
Margin: .25" X .25"



STEP 6

MAILING AREA

Place: Bottom Right
Width: 4"
Height: 2"
MUST BE LEFT BLANK



Sizes available: 6.5x9, 6.5 x8, 12x6, 11x6, 8.5 x 11

FRONT SIDE:

STEP 1

Yellow: Bleed area

A bleed is extending your art .125" beyond the cut line. (adds .25" total on each side: 6x11 final size=6.25x11.25 file size)

Example 1: Photographs (300DPI Minimum)



Example 2: Patterns or Colored Shapes



STEP 2

Magenta: Cut Line

The actual dimensions your job will be cut at. (6.5x9, 6.5 x 8, 12x6, ...)

STEP 3

Blue: Safe Area

Keep all design elements with a margin here Don't let your text outside the safe area (like this)

STEP 4

Crop Marks

color: registration black
length: .25"
offset: .08"

BACK/MAILING SIDE:

STEP 5

BLANK INDICIA AREA

Place: anywhere on the top half of the page
Width: 2.75"
Height: 1"
Margin: .25"x.25"



*****ECRWSS*****
Local Postal Customer

PRSR STD
ECRWSS
U.S. POSTAGE
PAID
EDDM RETAIL

ANYWHERE HERE



*****ECRWSS*****
Local Postal Customer

PRSR STD
ECRWSS
U.S. POSTAGE
PAID
EDDM RETAIL

NOT HERE

Sizes available: 8.5 x 11

FRONT SIDE:

STEP
1

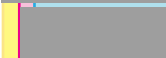
Yellow: Bleed area

A bleed is extending your art .125" beyond the cut line.
(adds .25" total on each side: 8.5x11 final size= 8.75x11.25 file size)

Example 1: Photographs (300DPI Minimum)



Example 2: Patterns or Colored Shapes



STEP
2

Magenta: Cut Line

The actual dimensions your job will be cut.

STEP
3

Blue: Safe Area

Keep all design elements with a margin here
Don't let your text outside the safe area
(like this)

STEP
4

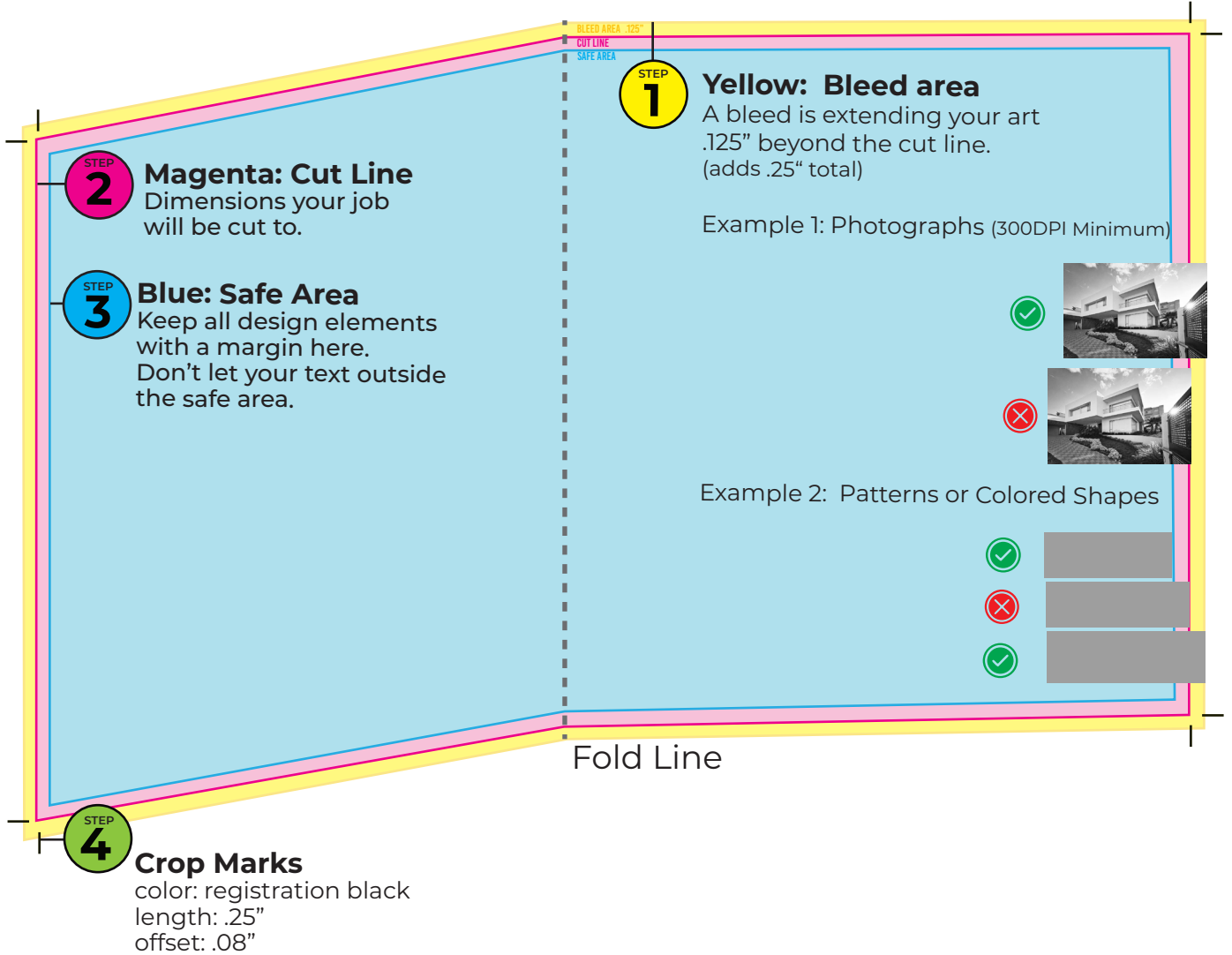
Crop Marks

color: registration black
length: .25"
offset: .08"

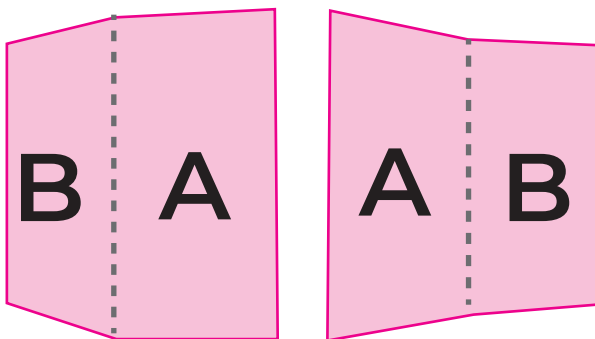
BLEED AREA: .125"
CUT LINE
SAFE AREA

Sizes available: 5.5x17, 6.5x18, 8.5x11, 8.5x14, 8.5x17, 8.5x18.5, 9x12, 11x17

INSIDE AND OUTSIDE: SET UP AS A SPREAD (double finished page size)



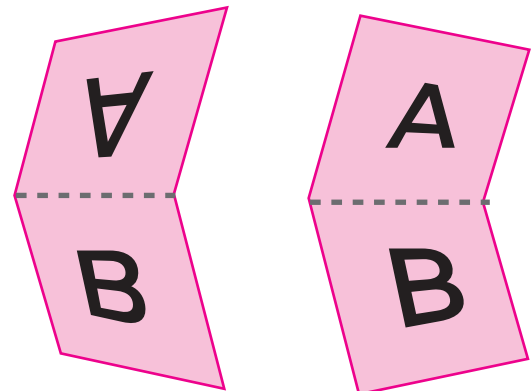
HORIZONTAL fold layout



Outside

Inside

VERTICAL fold layout

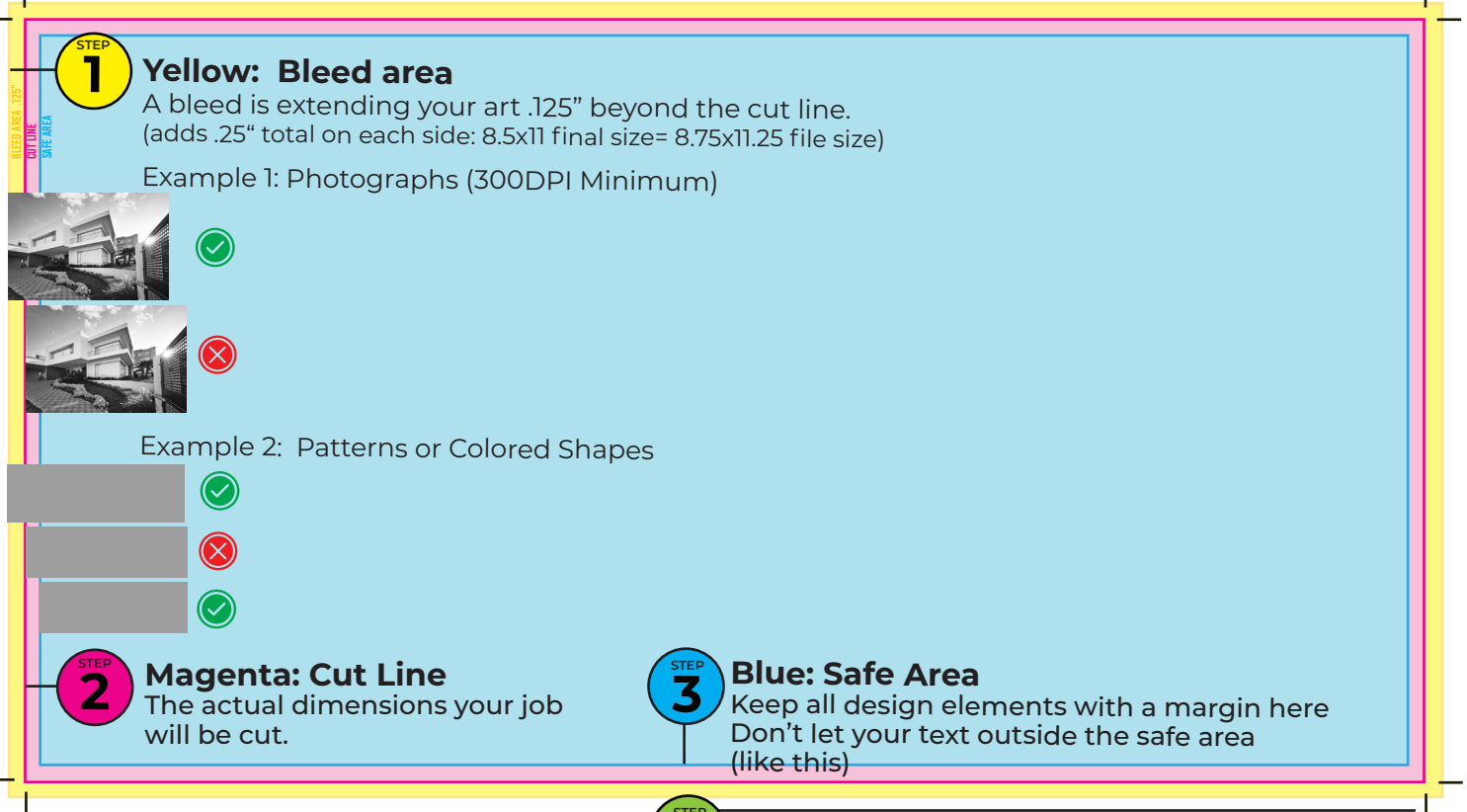


Outside

Inside

Sizes available: 8.5X8.5, 8.5X11 horizontal and vertical, 11x12.75

PAGES: MULTI-SINGLE PAGE PDF (page 1 is the cover, last page back cover)



The diagram illustrates the layout of a booklet page with various colored zones and lines. A yellow border represents the bleed area, extending .125 inches beyond the cut line. A magenta line indicates the cut line. A blue border represents the safe area, where all design elements must be contained. A green border represents the crop marks, which are registration black, .25 inches long, and .08 inches offset. The page is divided into two main sections: the top section for photographs and the bottom section for patterns or colored shapes.

STEP 1 Yellow: Bleed area
A bleed is extending your art .125" beyond the cut line.
(adds .25" total on each side: 8.5x11 final size= 8.75x11.25 file size)
Example 1: Photographs (300DPI Minimum)

STEP 2 Magenta: Cut Line
The actual dimensions your job will be cut.

STEP 3 Blue: Safe Area
Keep all design elements with a margin here
Don't let your text outside the safe area (like this)

STEP 4 Crop Marks
color: registration black
length: .25"
offset: .08"